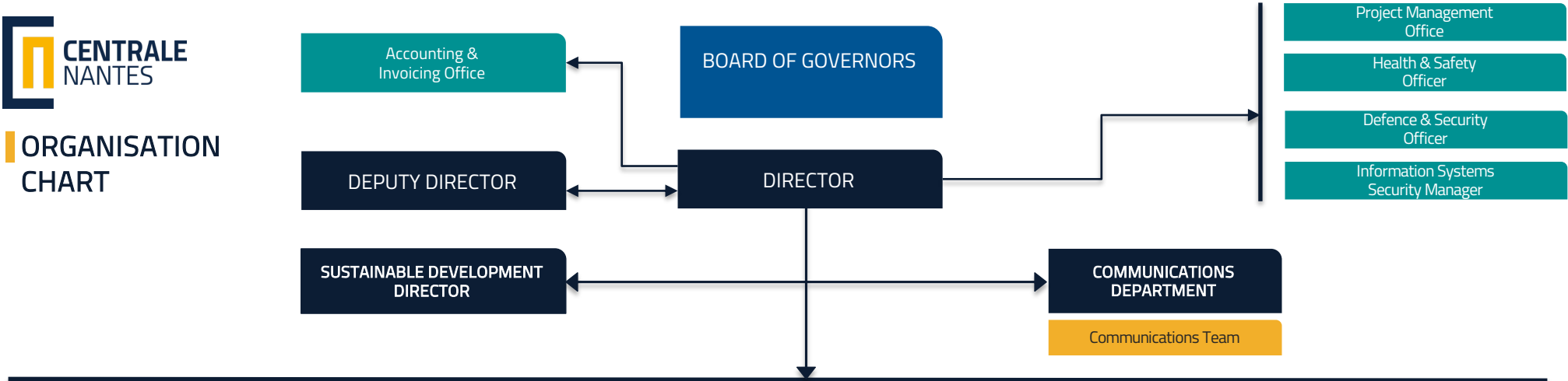


ORGANISATION CHART



GENERAL ADMINISTRATION DEPARTMENT	RESEARCH DEPARTMENT	ACADEMIC AFFAIRS DEPARTMENT		DEVELOPMENT DEPARTMENT	INTERNATIONAL RELATIONS DEPARTMENT
Operational Support	LHEEA - Research Laboratory in Hydrodynamics, Energetics & Atmospheric Environment	Student Affairs	ICT in Education	Project Development	International Relations Team
Human Resources	GeM – Research Institute in Civil & Mechanical Engineering	Student Life	Mathematics, Computer Science and Biology	Alumni	
Legal Affairs	LS2N – Laboratory of Digital Sciences of Nantes	Academic Affairs Engineering Programme Year 1	Automatic Control & Robotics	Executive Education	
Finance	AAU - Architectural and Urban Ambiances Laboratory	Academic Affairs Engineering Programme Year 2/3	Product Design and Industrial Systems	Business Incubator	
IT	Jean Leray Laboratory for Mathematics	Academic Affairs Masters	Mechanics, Materials and Civil Engineering		
Multimedia Library	SIS & MaSTIC doctoral schools	Academic Affairs - Degree apprenticeships	Fluid Mechanics and Energetics		
Infirmary			Social Sciences, Modern Languages & Sports Department		
Facilities					
Quality					
Skills development					
				Advisory Bodies Board of Governors (CA) Academic Council (CE) Scientific Council (CS)	Committees Ethics and Professional Conduct Committee Social Management Committee (CSA) and Specialised Section (FS) Equality and Diversity Committee Joint Committee for Contract Staff Joint Institution Committee (CPE) Joint Promotions Committee for Fixed-term Contract Staff
				Cross-functional Structures Sustainable development Network Sports Association Brio Initiative	